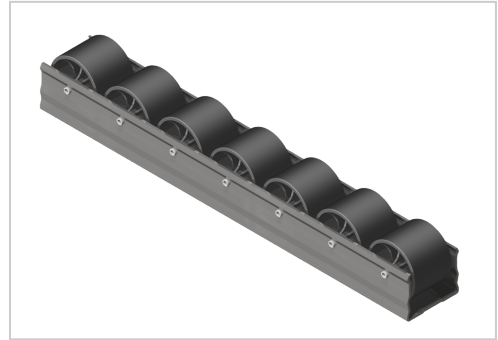


# Roller Conveyor 35-33 ST black-D28 St

**Product number** PL-1015 SN4000

**Length** 4000mm



## Product description

Each castor can bear a load of 10 KG.  
The castors have a diameter of 33 mm.

## Product properties

<b>Compatible with</b>	Bosch, Beewatec
<b>Series</b>	B- LPS Lean Production, S- LPS Lean Production
<b>Part type</b>	Roller tracks St
<b>Colour</b>	black
<b>Delivery unit</b>	Rods
<b>Lean system type</b>	D28 steel kit system, D28 Aluminium B kit system

## More images

