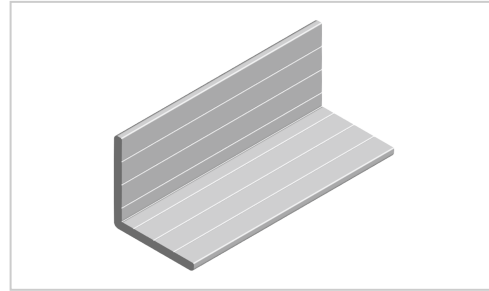


Profile M 40x40x4 E natural

Product number PI-1404 SN2000
Weight 1.62kg
Length 2000mm



Product description

Angle and flat profiles can be used in a variety of ways, e.g. for edging panel elements, as end or support strips, etc.

Delivery length 2000 mm

Compatible with item 7.0.002.7

Product properties

Material Al Mg Si 0.5 F25, artificially aged
Anodised E6EV1 10-15 µm silver
Tolerances EN 12020-2
Breite Profil 40 mm
Höhe Profil 40 mm
Contour Angle
Delivery unit Rods
Series Series 8
Profile length 2000 mm bar
Size 40x40 mm
Groove shape 4 sides closed
Colour natural
Execution economy

More images

