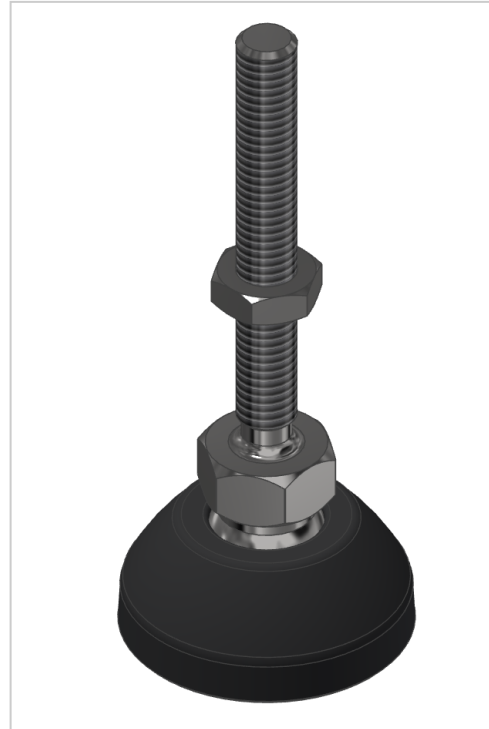


# Knuckle Foot D20, M5x45, black

**Product number** ZI-4180

**Weight** 0.007kg



## Product description

Adjustable feet are used for stepless height and level adjustment of assemblies and racks of any kind. The inclination of the plate is variable. A rubber insert can be fitted as an option.

## Product properties

<b>Compatible with</b>	item
<b>Colour</b>	black
<b>Adjustable foot type</b>	PA
<b>Material</b>	PA-GF
<b>Series</b>	Series 5
<b>Thread</b>	M5
<b>Base for swivel feet Ø</b>	20 mm
<b>Load capacity</b>	50 kg

## More images

