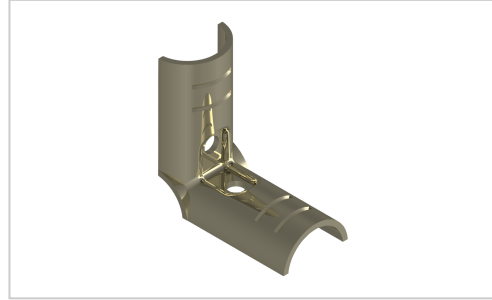


Basic Connector Corner Inside | ESD

Product number G-2S-Ni

Weight 0.095kg



Product description

Clamp connector made of steel for the assembly of stable pipe push-in clamp connections.

Product properties

Compatible with Beewatec

Series S- LPS Lean Production

Lean system type D28 steel kit system

Connector type Basic connector

More images

