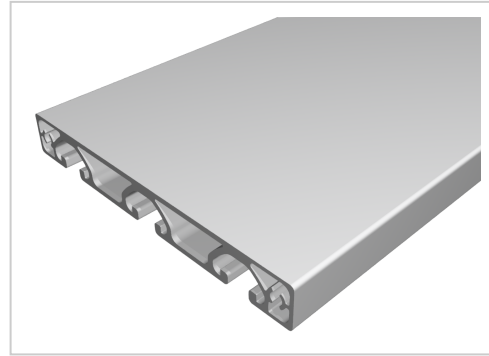


Profile 8 120x16 E, natural

Product number	PI-1019 SN6000
Weight	3.6kg
Length	6000mm



Product description

Profiles 8 are suitable for a wide range of assemblies. The grooves and the core holes of the profiles 8 are designed for M8 screws.

Delivery length 6030 mm

Product properties

Compatible with	item
Nutauszugskraft	F=1.750 N
Breite Profil	120 mm
Höhe Profil	16 mm
Groove shape	Open grooves
Delivery unit	Rods
Series	Series 8
Profile length	6000 mm bar
Contour	Rectangular
Colour	natural
Execution	economy
Size	120x16 mm

More images

