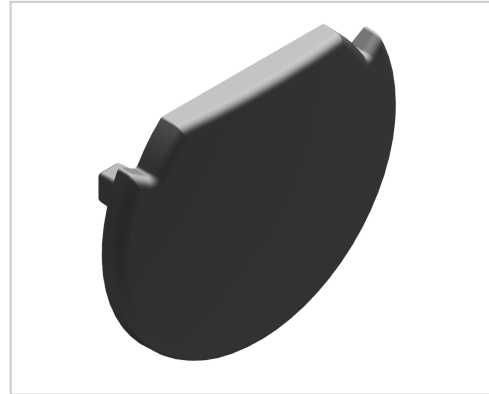


Cover Cap black D28

Product number ZL-1290

Weight 0.003kg



Product description

Rounded cover caps for the end face of the various profile cross-sections. deburring of the cut surface is not necessary. Cover caps are fixed by hammering them into the core bores.

Product properties

Compatible with Bosch
Series B- LPS Lean Production
Material PA-GF
Part type Caps for profiles
Lean system type D28 Aluminium B kit system

More images

