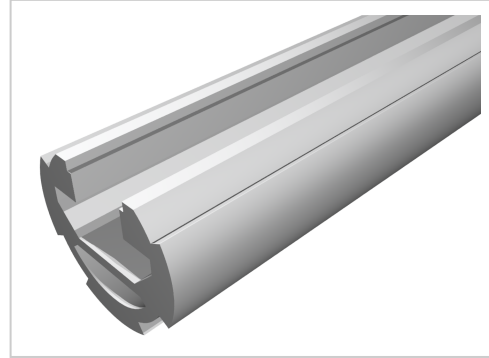


# Profile Tube 10 D 28, natural

**Product number** PL-1105 SN 6000

**Weight** 2.898kg

**Length** 6000mm



## Product description

Round tube with clamping grooves and additional groove 10 made of aluminum.

## Product properties

**Compatible with** Bosch

**Series** B- LPS Lean Production

**Delivery unit** Rods

**Profile length** 6000 mm bar

**Lean system type** D28 Aluminium B kit system

More images

