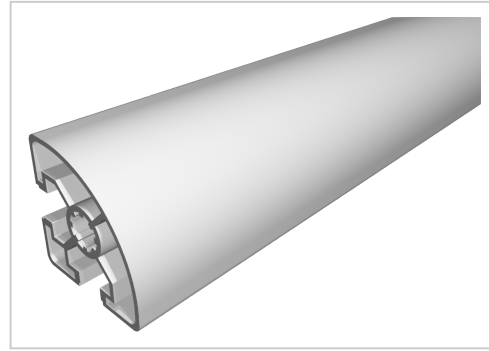


Profile 45x45 R light natural-10

Product number PB-1255 SZ

Weight 1.27kg



Product description

The profiles in pitch 45 with groove 10 are suitable for assemblies of all kinds. Due to the different profile geometries, the material requirements can be adapted to the application. The grooves are designed for M8 screws.

Cut to size max. 6000 mm

Compatible with Bosch 3 842 992 897

Product properties

Compatible with	Bosch
Breite Profil	45 mm
Höhe Profil	45 mm
Series	Series 45-10
Profile length	Cut length
Delivery unit	Cuts
Execution	light
Contour	Round
Colour	natural
Modular dimension	Modular dimension 45
Size	45x45 mm

More images

