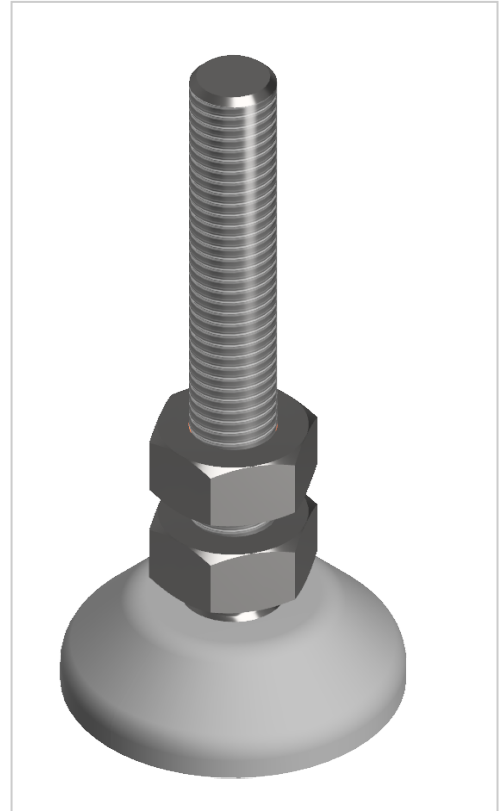


Knuckle Foot D40, M10x80, grey | grey

Product number ZI-1382-G

Weight 0.052kg



Product description

Adjustable feet are used for stepless height and level adjustment of assemblies and racks of any kind. The inclination of the plate is variable. A rubber insert can be fitted as an option.

Compatible with item 0.0.265.74

Product properties

Compatible with	item
Part type	levelling feet
Base for swivel feet Ø	40 mm
Adjustable foot type	PA
Total height	80 mm
Series	Series 8
Material	PA-GF
Thread	M10
Load capacity	150 kg

More images

