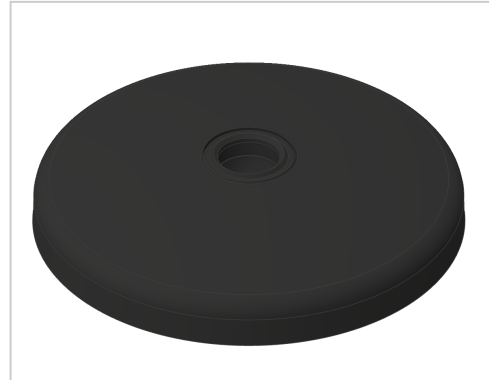


## Base A D100 ZN, black

**Product number** ZB-3200

**Weight** 0.584kg



### Product description

The combination of a threaded rod and a swivel foot plate gives a complete adjustable foot. Leveling feet serve as any type stepless height and level adjustment of modules and racks. The tilt of the plate is variable. Optionally, a rubber insert can be installed.

### Product properties

<b>Compatible with</b>	Bosch
<b>Part type</b>	levelling feet
<b>Colour</b>	black
<b>Execution</b>	ZN
<b>Series</b>	Series 60-10, Series 45-10, Series 50-10, Series 40-10, Series 30 8, Series 20-6
<b>Base for swivel feet Ø</b>	100 mm
<b>Type</b>	A

More images

