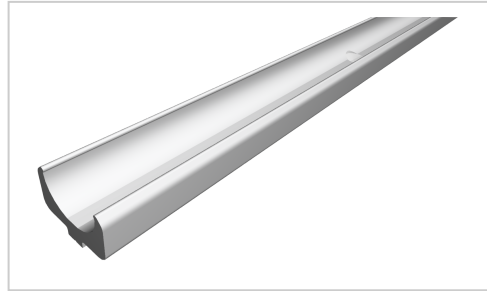


Shaft clamp profile D25, natural-8

Product number PI-1537 SZ

Weight 2.018kg



Product description

The shaft clamp profile is used to hold the guide shaft d25.

The shaft clamp profile is screwed on with S1397 countersunk screws M6x16 DIN 7991 and NI-1040 slot nuts M6, galvanised-8.

The holes for the screw connection are 200 mm apart.

Compatible with item 0.0.350.02

Product properties

Material Al Mg Si 0.5 F25, artificially aged

Anodised E6EV1 10-15 µm silver

Tolerances EN 12020-2

Compatible with item

Part type Roller guides

Profile length Cut length

Series Series 8

Delivery unit Cuts

Diameter mm Ø 25

Colour natural

More images

